

ANO6 Antibody (N-term)
Affinity Purified Rabbit Polyclonal Antibody (Pab)
Catalog # AP20252a**Specification**

ANO6 Antibody (N-term) - Product Information

Application	WB,E
Primary Accession	O4KMQ2
Other Accession	NP_001020527.2
Reactivity	Human
Host	Rabbit
Clonality	Polyclonal
Isotype	Rabbit IgG
Antigen Region	68-96

ANO6 Antibody (N-term) - Additional Information**Gene ID** 196527**Other Names**

Anoctamin-6, Small-conductance calcium-activated nonselective cation channel, SCAN channel, Transmembrane protein 16F, ANO6, TMEM16F

Target/Specificity

This ANO6 antibody is generated from rabbits immunized with a KLH conjugated synthetic peptide between 68-96 amino acids from the N-terminal region of human ANO6.

Dilution

WB~~1:1000

E~~Use at an assay dependent concentration.

Format

Purified polyclonal antibody supplied in PBS with 0.09% (W/V) sodium azide. This antibody is purified through a protein A column, followed by peptide affinity purification.

Storage

Maintain refrigerated at 2-8°C for up to 2 weeks. For long term storage store at -20°C in small aliquots to prevent freeze-thaw cycles.

Precautions

ANO6 Antibody (N-term) is for research use only and not for use in diagnostic or therapeutic procedures.

ANO6 Antibody (N-term) - Protein Information**Name** ANO6 ([HGNC:25240](#))**Function** Small-conductance calcium-activated nonselective cation (SCAN) channel which acts as

a regulator of phospholipid scrambling in platelets and osteoblasts (PubMed:[20056604](#), PubMed:[21107324](#), PubMed:[21908539](#), PubMed:[22006324](#), PubMed:[22946059](#)). Phospholipid scrambling results in surface exposure of phosphatidylserine which in platelets is essential to trigger the clotting system whereas in osteoblasts is essential for the deposition of hydroxyapatite during bone mineralization (By similarity). Has calcium-dependent phospholipid scramblase activity; scrambles phosphatidylserine, phosphatidylcholine and galactosylceramide (By similarity). Can generate outwardly rectifying chloride channel currents in airway epithelial cells and Jurkat T lymphocytes (By similarity).

Cellular Location

Cell membrane; Multi-pass membrane protein. Note=Shows an intracellular localization according to PubMed:22075693

Tissue Location

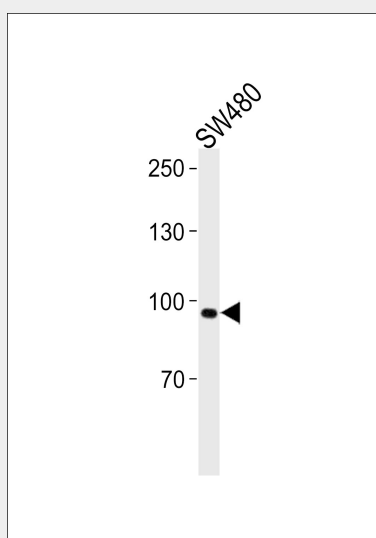
Expressed in embryonic stem cell, fetal liver, retina, chronic myelogenous leukemia and intestinal cancer

ANO6 Antibody (N-term) - Protocols

Provided below are standard protocols that you may find useful for product applications.

- [Western Blot](#)
- [Blocking Peptides](#)
- [Dot Blot](#)
- [Immunohistochemistry](#)
- [Immunofluorescence](#)
- [Immunoprecipitation](#)
- [Flow Cytometry](#)
- [Cell Culture](#)

ANO6 Antibody (N-term) - Images



ANO6 Antibody (N-term) (Cat. #AP20252a) western blot analysis in SW480 cell line lysates (35ug/lane). This demonstrates the ANO6 antibody detected the ANO6 protein (arrow).

ANO6 Antibody (N-term) - Background

May act as a calcium-activated chloride channel.

ANO6 Antibody (N-term) - References

Rose, J. Phd, et al. Mol. Med. (2010) In press :
Hartzell, H.C., et al. J. Physiol. (Lond.) 587 (PT 10), 2127-2139 (2009) :
Katoh, M., et al. Int. J. Oncol. 24(5):1345-1349(2004)
Adams, M.D., et al. Nature 377 (6547 SUPPL), 3-174 (1995) :